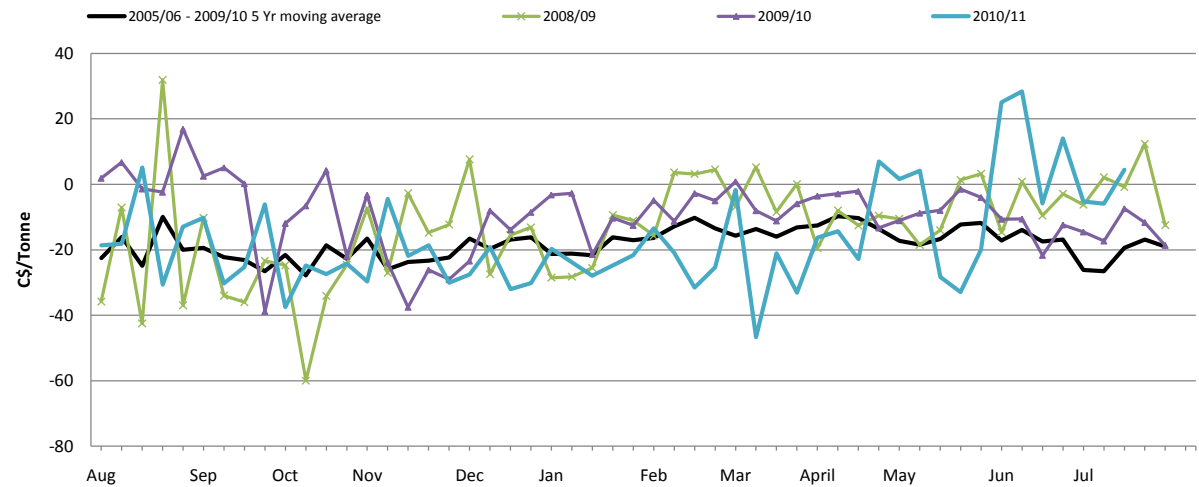


Saskatoon Region (Par Region) Canola Basis



Summary Statistics of Weekly Canola Basis 2005-06/2009-10

Month	Aug					Sep				Oct				Nov				
Week	1	2	3	4	5	6	7	8	9	10	11	12	13	14	15	16	17	18
Minimum	-35.815	-31.790	-42.500	-32.790	-36.960	-34.300	-34.018	-36.006	-38.820	-27.000	-59.960	-34.100	-24.560	-32.000	-32.000	-37.540	-36.000	-32.000
Maximum	1.882	6.724	-1.400	31.900	16.880	2.500	5.110	0.240	-21.790	-11.900	-6.543	4.276	-21.000	-3.260	-19.520	-2.715	-14.808	-12.298
Average	-22.497	-16.058	-24.928	-9.944	-19.986	-19.382	-22.268	-23.093	-26.568	-21.562	-27.805	-18.669	-22.746	-16.597	-25.949	-23.737	-23.276	-22.347

Dec				Jan					Feb				Mar			
19	20	21	22	23	24	25	26	27	28	29	30	31	32	33	34	35
-34.800	-37.000	-31.800	-32.080	-39.880	-39.880	-32.880	-32.880	-29.880	-29.880	-33.000	-30.100	-38.660	-37.000	-37.880	-33.000	-37.300
7.624	-8.060	-9.400	-5.310	-3.208	-2.710	-8.910	-8.910	-11.072	-4.890	3.656	3.165	4.540	0.858	5.256	-8.412	0.070
-16.583	-19.679	-16.911	-16.211	-21.300	-21.144	-21.659	-16.199	-17.078	-16.366	-12.884	-10.236	-13.408	-15.684	-13.617	-16.002	-13.112

April				May					Jun				Jul				
36	37	38	39	40	41	42	43	44	45	46	47	48	49	50	51	52	53
-21.300	-21.300	-21.300	-28.400	-34.300	-34.300	-34.300	-34.300	-29.300	-33.000	-33.000	-33.000	-32.330	-53.500	-57.500	-31.900	-30.330	-26.000
-3.574	-2.870	-2.090	-7.020	-10.534	-8.790	-7.950	1.340	3.240	-10.640	0.804	-9.502	-2.900	-6.242	2.152	-0.820	12.380	-12.480
-12.559	-9.725	-10.316	-13.642	-17.271	-18.399	-16.637	-12.269	-11.790	-17.174	-13.955	-17.462	-16.883	-26.134	-26.530	-19.372	-16.862	-19.035