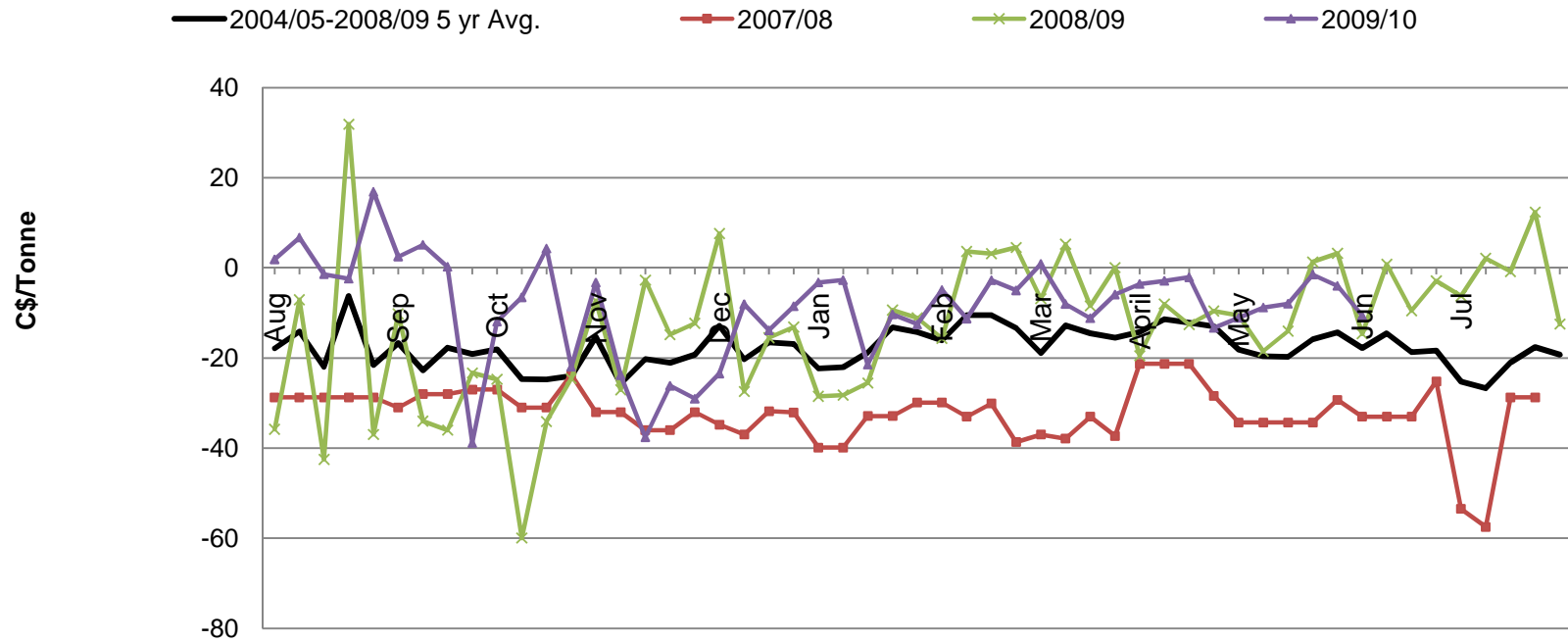


### Saskatoon Region (Par Region) Canola Basis



Summary Statistics of Weekly Saskatoon Region Canola Basis, 2004/05-2008/09

Month	Aug					Sep				Oct				Nov				
Week	1	2	3	4	5	6	7	8	9	10	11	12	13	14	15	16	17	18
Minimum	-35.815	-31.790	-42.500	-32.790	-36.960	-34.300	-34.018	-36.006	-27.000	-27.000	-59.960	-34.100	-28.200	-32.000	-32.000	-36.000	-36.000	-32.000
Maximum	25.100	16.400	13.300	31.900	8.900	16.200	2.800	27.100	-1.500	5.700	9.200	-13.120	-21.000	3.400	-19.520	-2.715	-14.808	-12.298
Average	-17.853	-14.123	-21.988	-6.268	-21.582	-16.642	-22.730	-17.721	-19.104	-18.042	-24.656	-24.784	-23.996	-15.265	-25.706	-20.229	-21.032	-19.268

Month	Dec				Jan					Feb				Mar			
Week	19	20	21	22	23	24	25	26	27	28	29	30	31	32	33	34	35
Minimum	-34.800	-37.000	-31.800	-32.080	-39.880	-39.880	-32.880	-32.880	-29.880	-29.880	-33.000	-30.100	-38.660	-37.000	-37.880	-33.000	-37.300
Maximum	7.624	-11.100	-9.400	-5.310	-8.300	-7.000	-6.800	4.800	1.700	-3.300	3.656	3.165	4.540	-6.848	5.256	-3.800	0.070
Average	-12.857	-20.287	-16.540	-16.905	-22.318	-22.002	-18.730	-13.177	-14.232	-16.048	-10.511	-10.445	-13.306	-18.896	-12.811	-14.528	-15.512

Month	April				May					Jun				Jul				
Week	36	37	38	39	40	41	42	43	44	45	46	47	48	49	50	51	52	53
Minimum	-21.300	-21.300	-21.300	-28.400	-34.300	-34.300	-34.300	-34.300	-29.300	-33.000	-33.000	-33.000	-32.330	-53.500	-57.500	-31.900	-30.330	-26.000
Maximum	-4.520	-4.520	-5.720	-7.020	-10.534	-14.520	-11.910	1.340	3.240	-12.590	0.804	-9.502	-2.900	-6.242	2.152	-0.820	12.380	-12.480
Average	-14.244	-11.409	-12.170	-12.978	-18.153	-19.601	-19.747	-15.832	-14.314	-17.784	-14.497	-18.726	-18.328	-25.210	-26.696	-21.018	-17.598	-19.240